

**This electronic collection of documents is provided  
for the convenience of the user  
and is Not a Certified Document –**

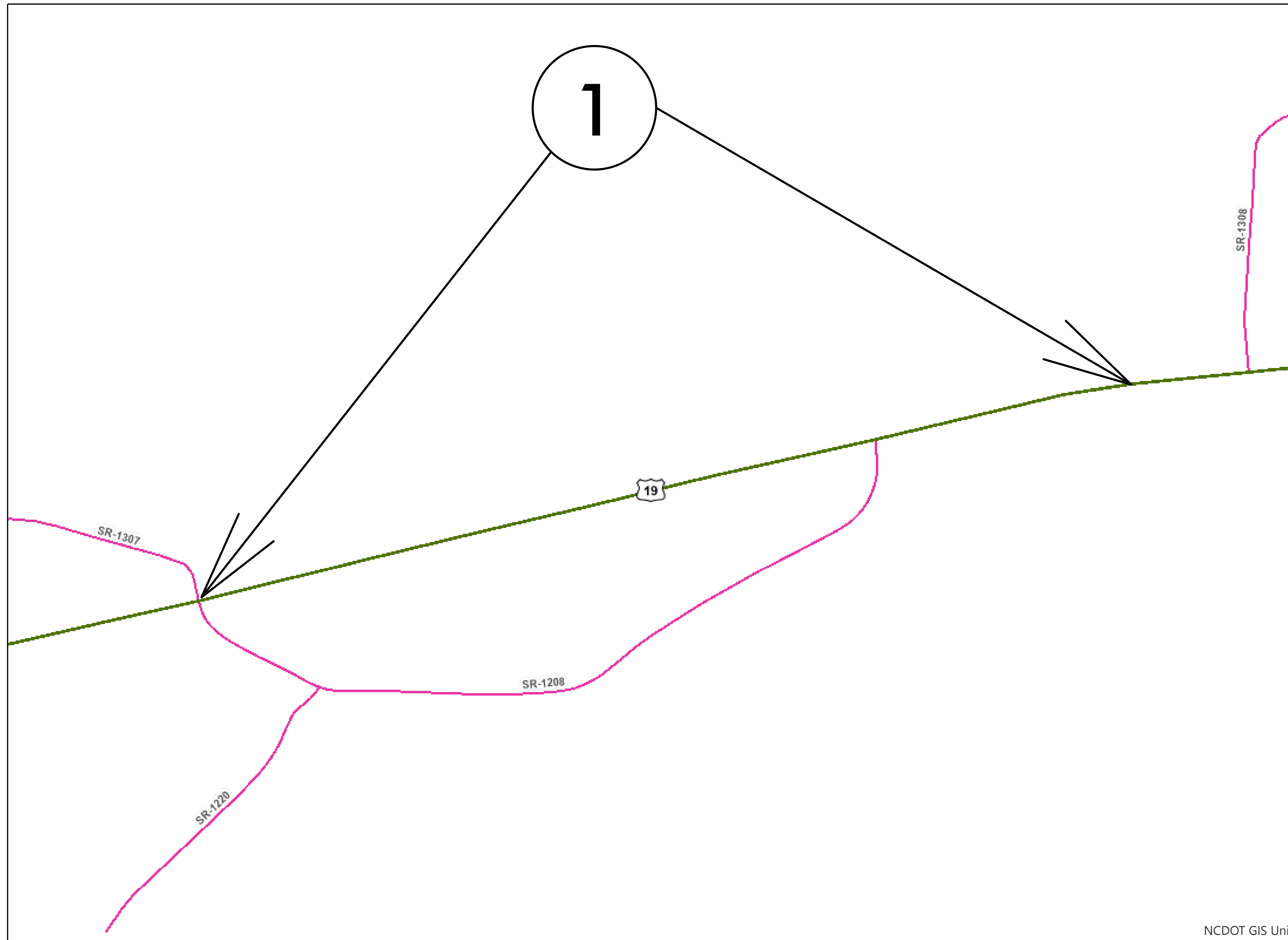
**The documents contained herein were originally issued  
and sealed by the individuals whose names and license  
numbers appear on each page, on the dates appearing  
with their signature on that page.**

**This file or an individual page  
shall not be considered a certified document.**

09/08/09

# HAYWOOD COUNTY

STATE	STATE PROJECT REFERENCE NO.	SHEET NO.	TOTAL SHEETS
N.C.	2026CPT.14.08.10441	1	13
STATE PROJ. NO.	F. A. PROJ. NO.	DESCRIPTION	
2026CPT.14.08.10441		CON	
50943.3.7		CON	



## MAP 1



BEG



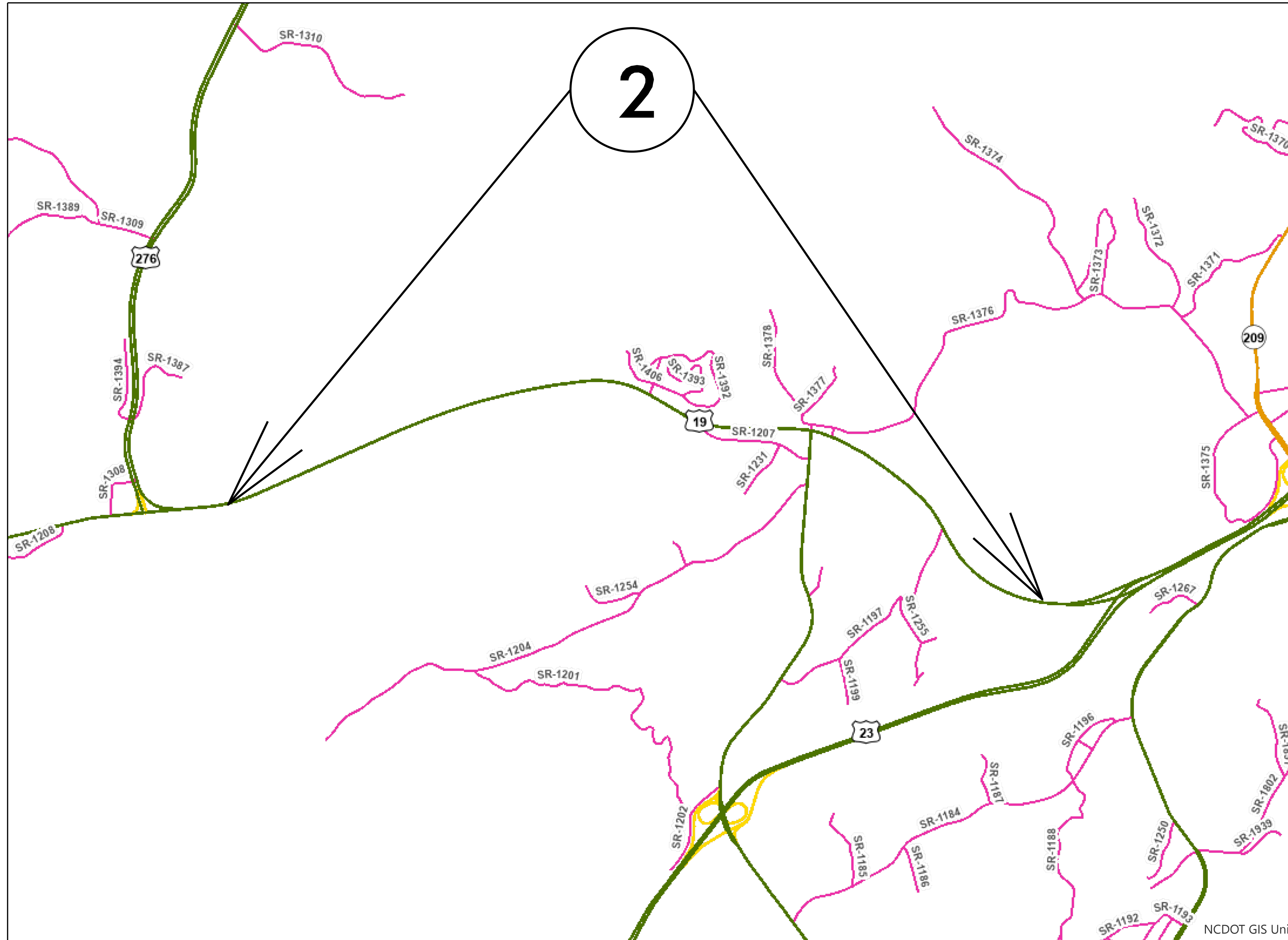
END

NCDOT GIS Unit

CONTRACT: DN01141

STATE	STATE PROJECT REFERENCE NO.	SHEET NO.	TOTAL SHEETS
N.C.	2026CPT.14.08.10441	2	
STATE PROJ. NO.	F. A. PROJ. NO.	DESCRIPTION	

# HAYWOOD COUNTY



## MAP 2



**BEG**



**END**

NCDOT GIS Unit

**CONTRACT: DN01141**

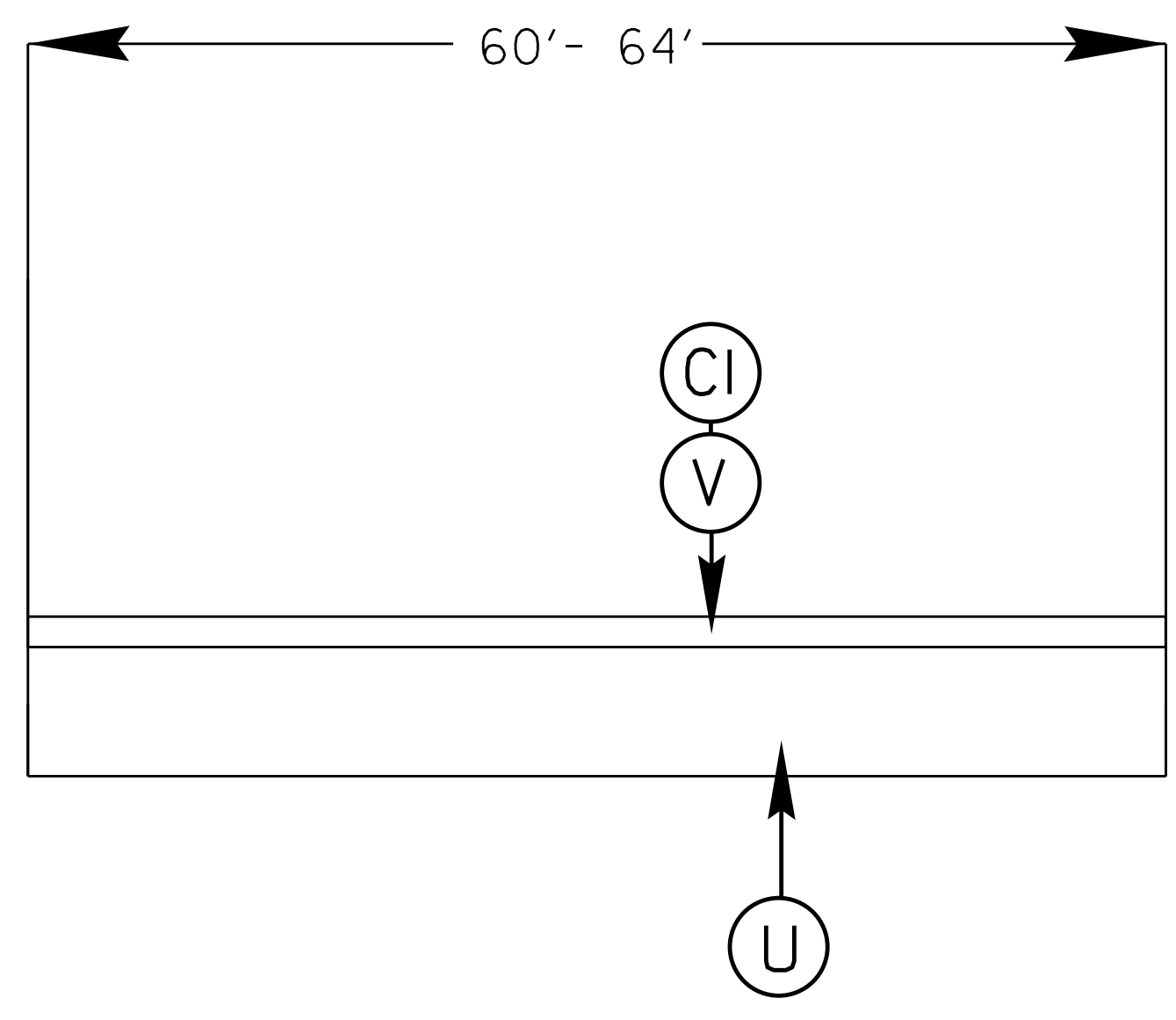
09/08/09

STATE	STATE PROJECT REFERENCE NO.	SHEET NO.	TOTAL SHEETS
N.C.	2026CPT.14.05.10881	3	
STATE PROJ. NO.	F. A. PROJ. NO.	DESCRIPTION	
2026CPT.14.05.10881			
50943.3.7			

## SURFACING SCHEDULE

C1	PROP. APPROX. 1 1/2" ASPHALT CONCRETE SURFACE COURSE, TYPE S9.5C, AT AN AVERAGE RATE OF 168LBS. PER SQ. YD.
U	EXISTING PAVEMENT
V	MILLED ASPHALT PAVEMENT 1 1/2" IN DEPTH LOCATIONS AS DIRECTED BY PROJECT ENGINEER

## TYPICAL 1



CONTRACT: DN01141

09/08/09



STATE	STATE PROJECT REFERENCE NO.	SHEET NO.	TOTAL SHEETS
N.C.	2026CPT.14.05.10881	5	
STATE PROJ. NO.	F. A. PROJ. NO.	DESCRIPTION	
2026CPT.14.05.10881			
50943.3.7			

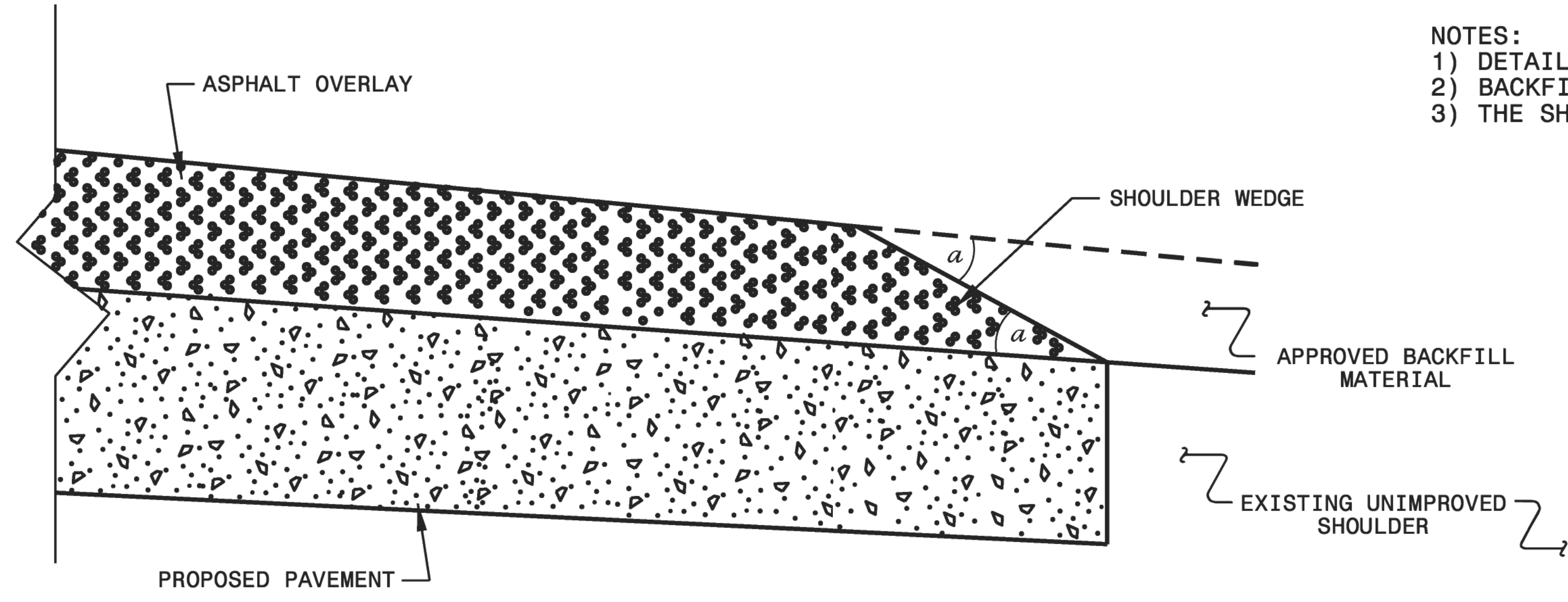
**Bridge Structure Table**

Map #	Route No.	Road Name	County	Structure No.	Posted SV (Tons)	Posted TTST (Tons)	Paving Across Bridge
1	US-19	US-19	Haywood	430094	99	99	No

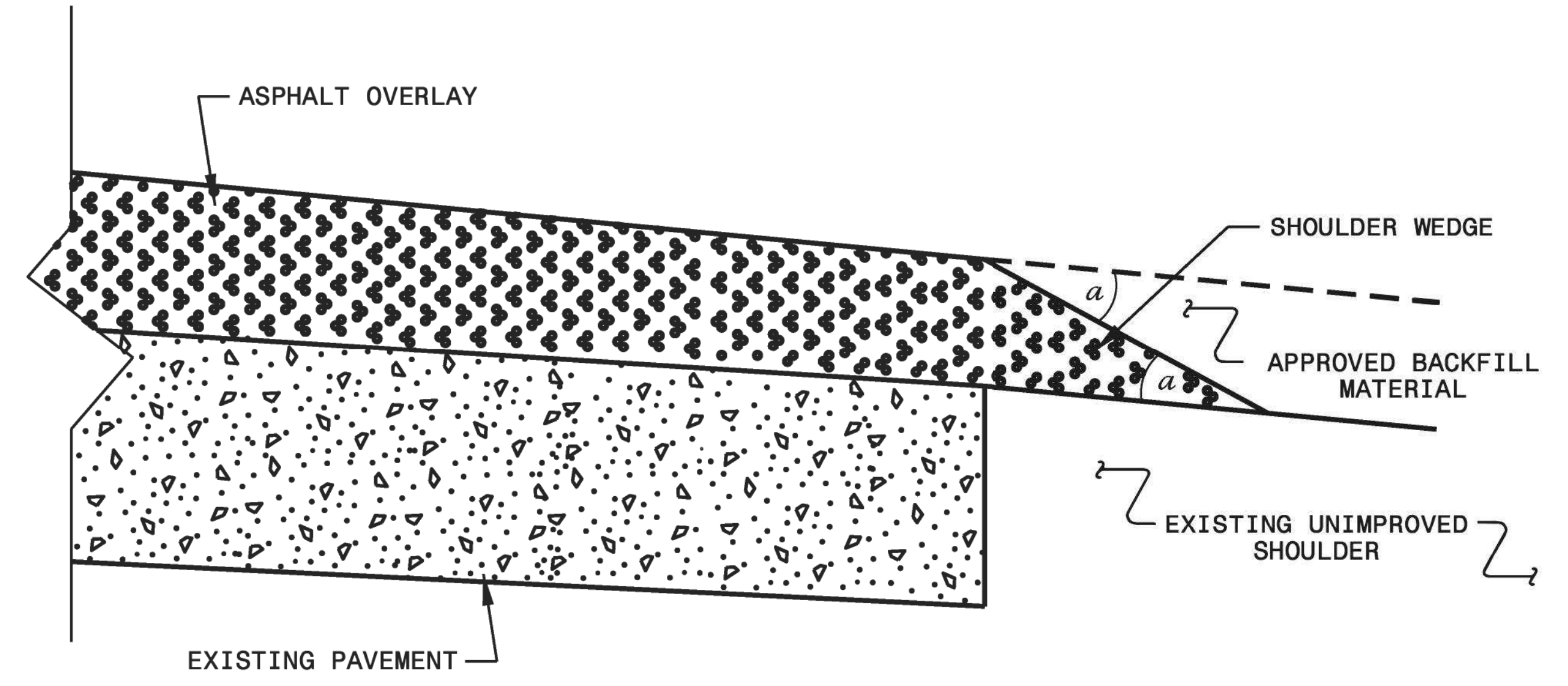
**CONTRACT: DN01141**

09/08/09

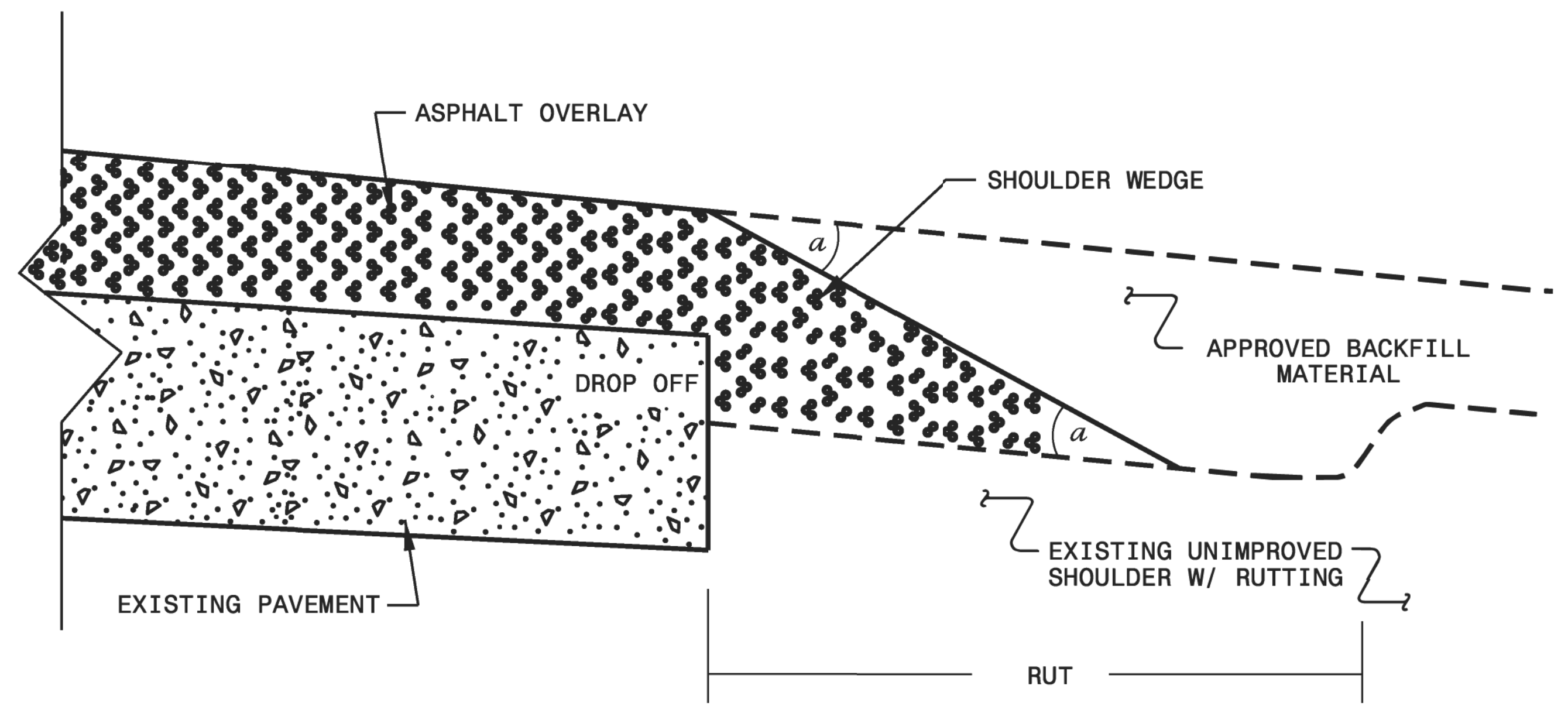
- NOTES:
- 1) DETAIL DOES NOT APPLY TO OGAFC AND ULTRA-THIN BONDED WEARING COURSE.
  - 2) BACKFILL SHOULDER WITH APPROVED MATERIAL.
  - 3) THE SHOULDER WEDGE DEVICE MAY BE DISENGAGED AT PAVED DRIVEWAYS AND SIDE STREETS.



**SHOULDER WEDGE DETAIL**  
 (Resurfacing Projects w/ Widening or  
 with Existing Paved Shoulder having no dropoffs)



**SHOULDER WEDGE DETAIL**  
 (Resurfacing Projects w/ NO Widening)



**SHOULDER WEDGE DETAIL**  
 (Resurfacing Adjacent to  
 Rutted Shoulder)

- SHOULDER WEDGE ANGLE = 30°

**CONTRACT STANDARDS  
 AND DEVELOPMENT UNIT**  
 Office 919-707-6950 FAX 919-250-4119

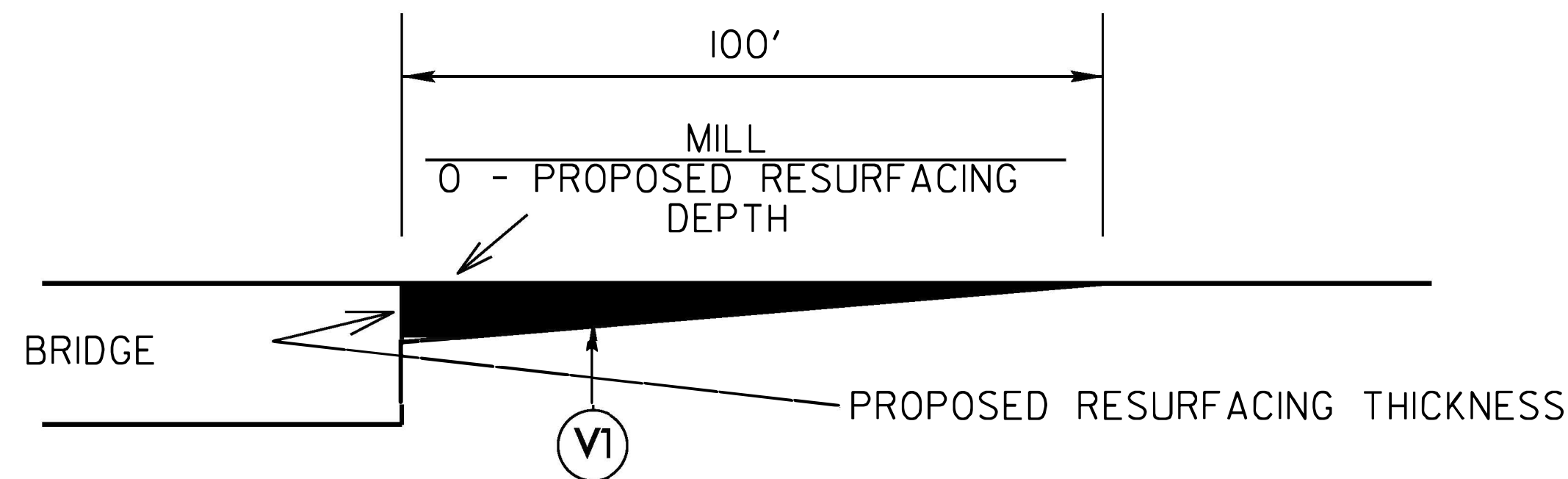
**SHOULDER WEDGE  
 DETAILS**

ORIGINAL BY: T.SPELL DATE: 7-19-11  
 MODIFIED BY: DATE: 10/18/12  
 CHECKED BY: DATE:  
 FILE SPEC.: s:\usr\det\_a19\stand\shoulderwed\_details1.dwg

CONTRACT: DN01141

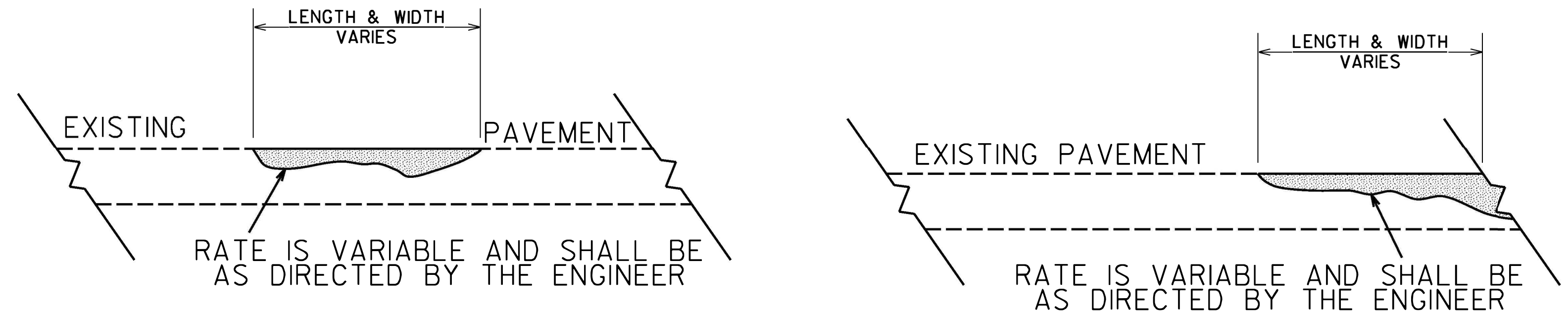
\*\*\*\*\*CONDITIONS\*\*\*\*\*

STATE	STATE PROJECT REFERENCE NO.	SHEET NO.	TOTAL SHEETS
N.C.	2026CPT.14.08.10441	7	
STATE PROJ. NO.	F. A. PROJ. NO.	DESCRIPTION	
50943.3.7			



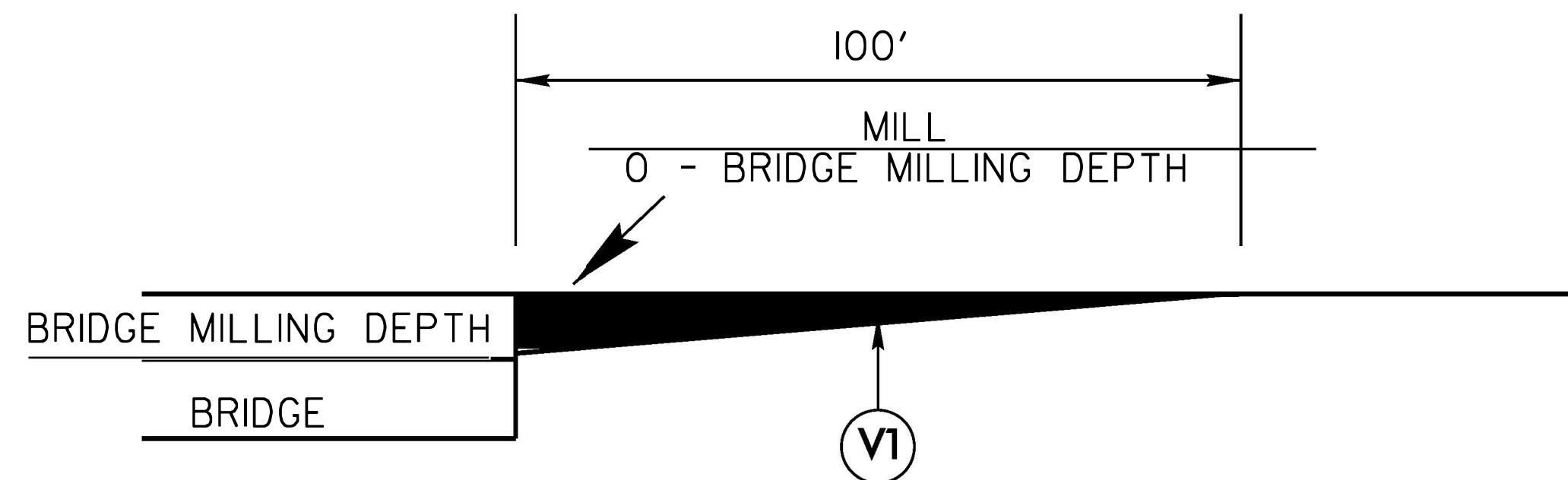
**MILLING DETAIL AT BRIDGE APPROACHES**

**WHERE BRIDGES WILL NOT BE RESURFACED. THIS WILL BE PAID FOR AS INCIDENTAL MILLING.**



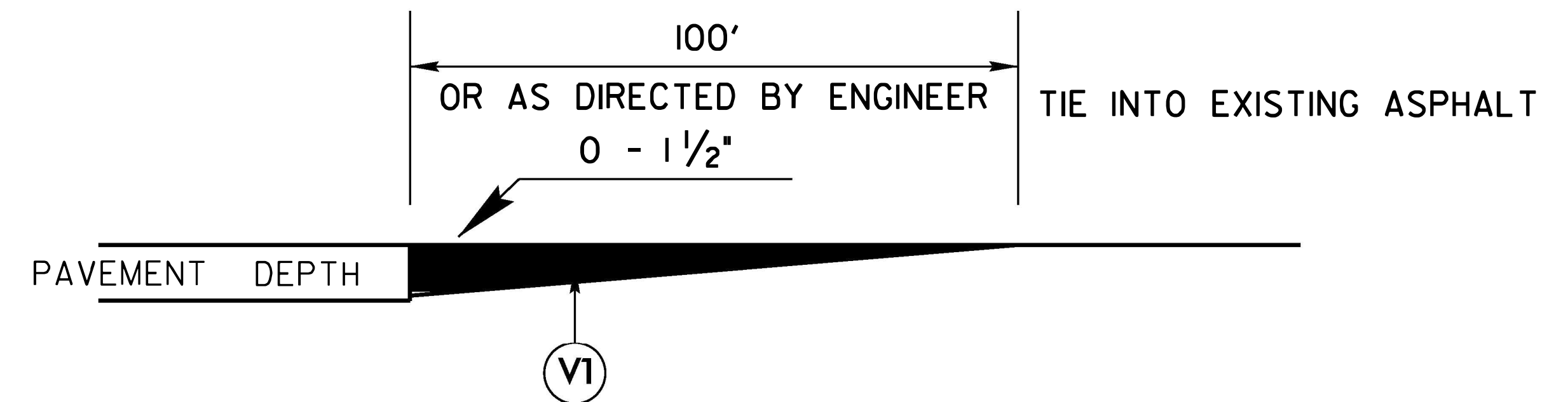
**DETAIL SHOWING METHOD OF WEDGING**

**\*PROPOSED WEDGE COURSE\* ( 114 LBS PER SQ YARD PER 1" DEPTH)**



**MILLING DETAIL AT BRIDGE APPROACHES**

**WHERE BRIDGES WILL BE MILLED THEN RESURFACED. THIS WILL BE PAID FOR AS INCIDENTAL MILLING.**



**DETAIL TO TIE INTO EXIST PAVEMENT**

**THE CONTRACTOR'S ATTENTION IS DIRECTED TO THE FACT THAT HE WILL BE REQUIRED TO MILL THE EXISTING ASPHALT PAVEMENT TO ENSURE A PROPER TIE-IN WITH THE EXISTING SURFACE AT THE BEGINNING, END AND Y LINES OF EACH MAP. THIS WILL BE PAID FOR AS 1 1/2" MILLING.**

**CONTRACT: DN01141**

09/08/09

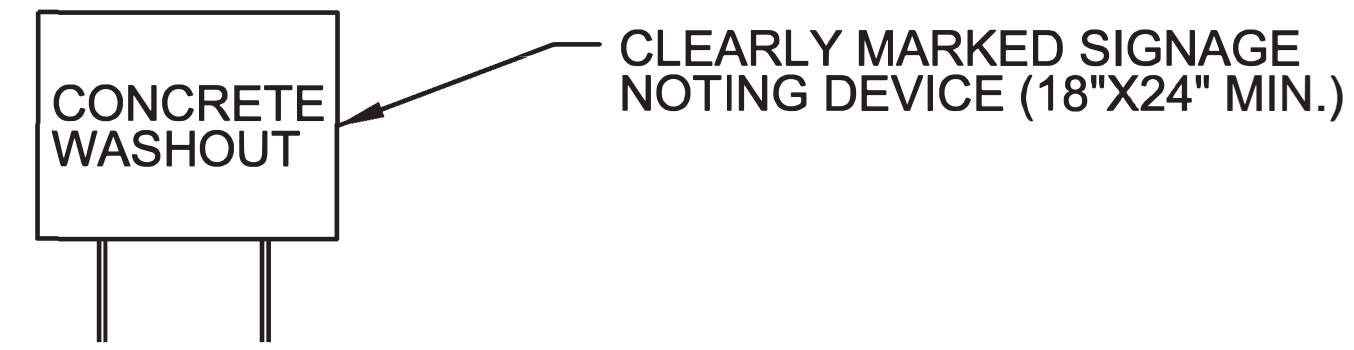
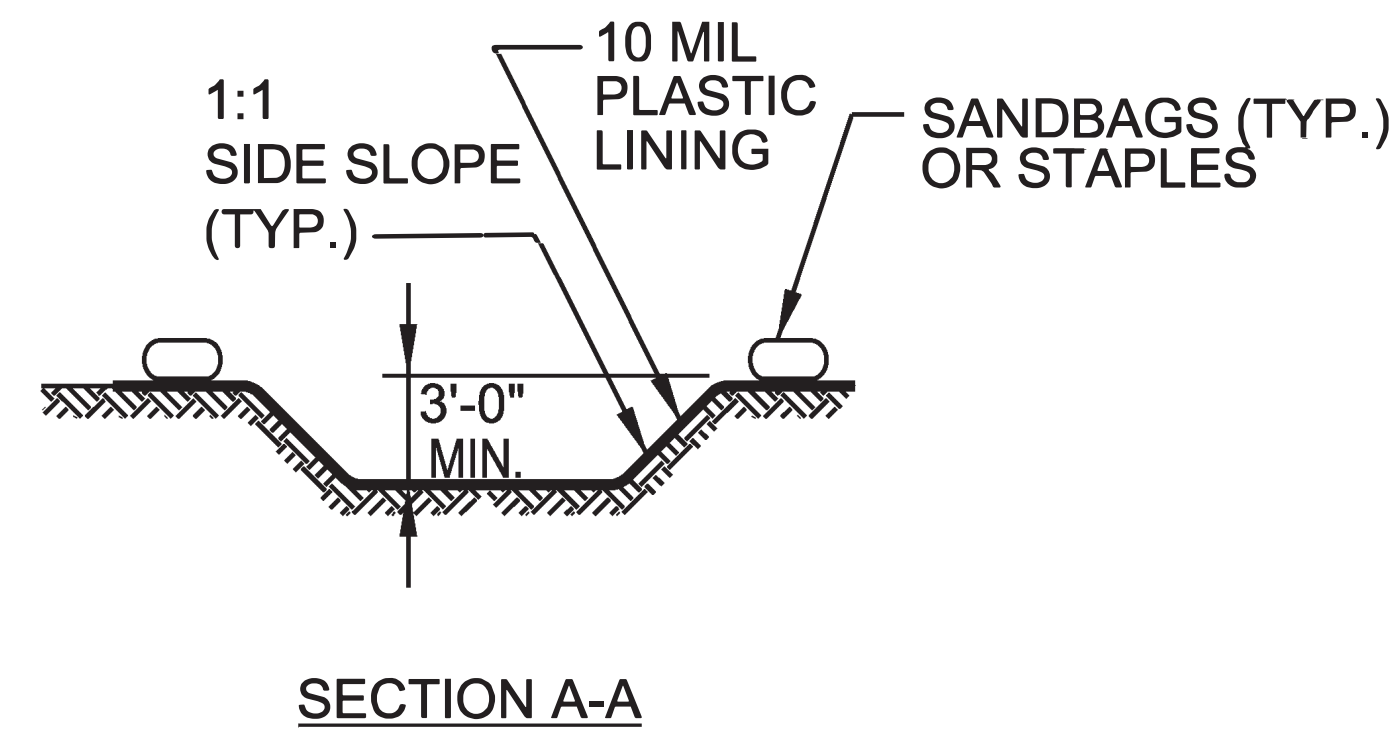
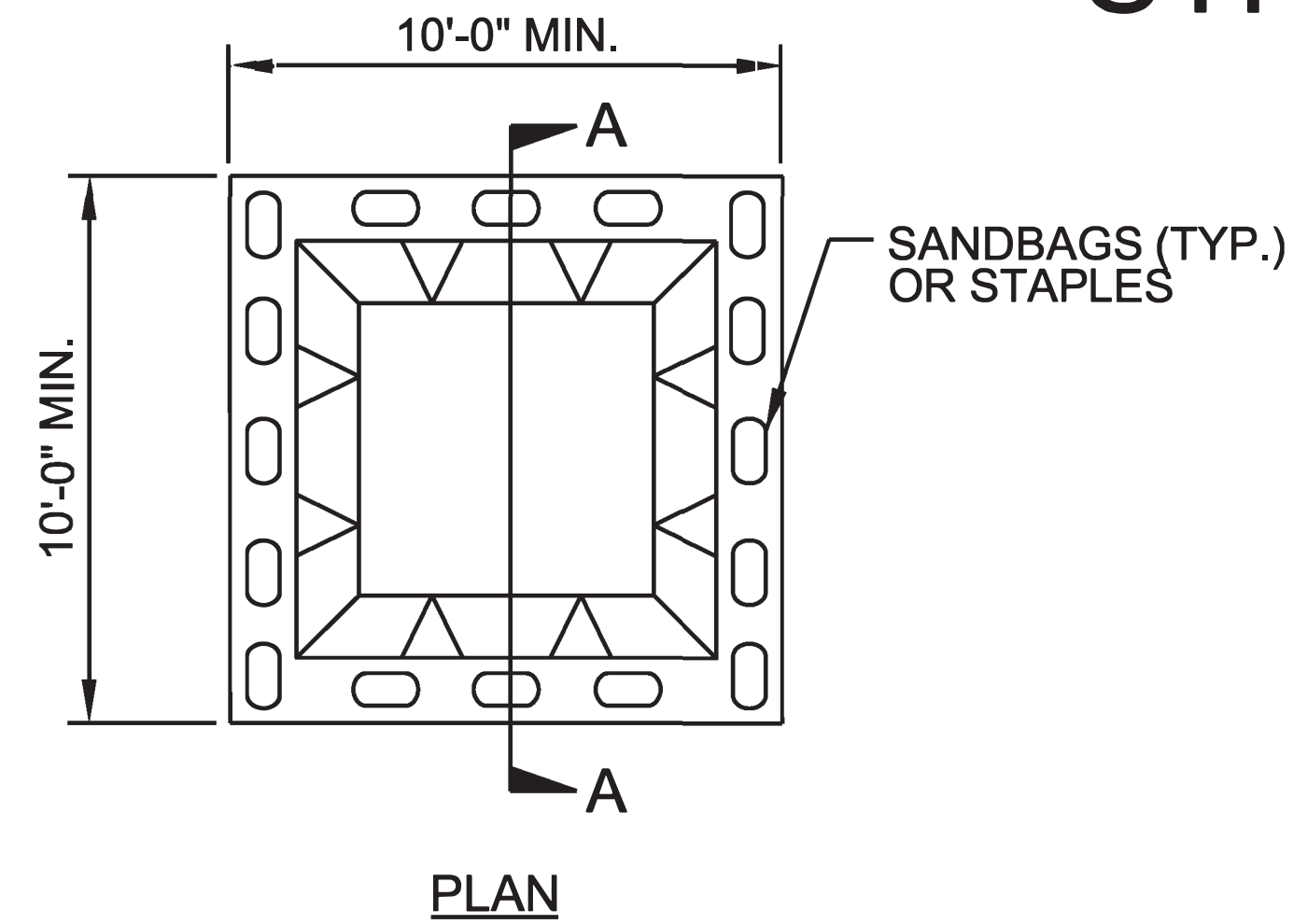
PROJECT NO.	SHEET NO.	TOTAL NO.
50943.3.7	8	

Concrete Repairs						
Map	Road/Intersection	WCR	4" Sidewalk	2'-6" Curb & Gutter	6" Concrete Driveway	Notes
2	US-19			6		NE Corner @ MM 11.81
2	US-19		21.32	32		Remove curb ramps and replace with sidewalk both SE & NE corners of intersection @ MM 11.64
2	US-19		9.72	31		Remove median island and existing curb ramp
2	US-19	2				Type 2B @ MM 11.54
2	US-19	1				Type 7 median island pass through
2	US-19/ SR-1197	1				Type 3 @ S corner of intersection
2	US-19			8		Replace broken 2'6" curb at MM 11.0 W corner
2	US-19	1		22		Type 3 @ MM 11.0 E Corner
1	US-19	2		24		Type 1 Mod @

Total	7	31.04	123	0
	EA	SY	LF	SY

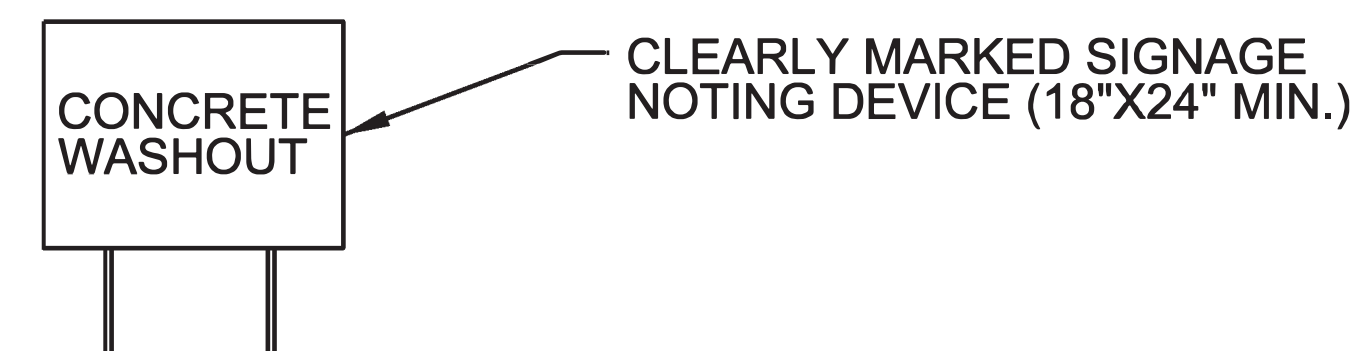
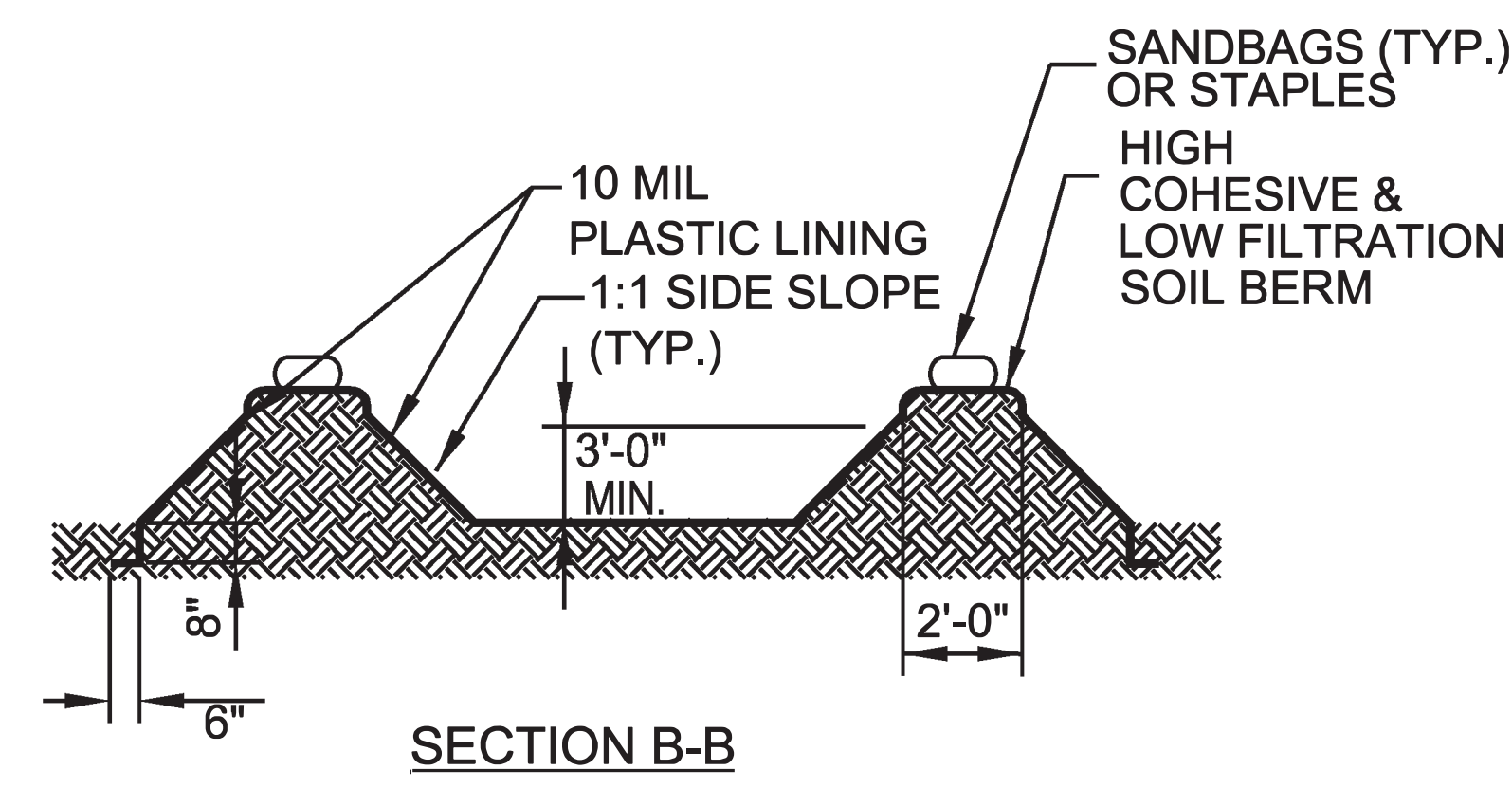
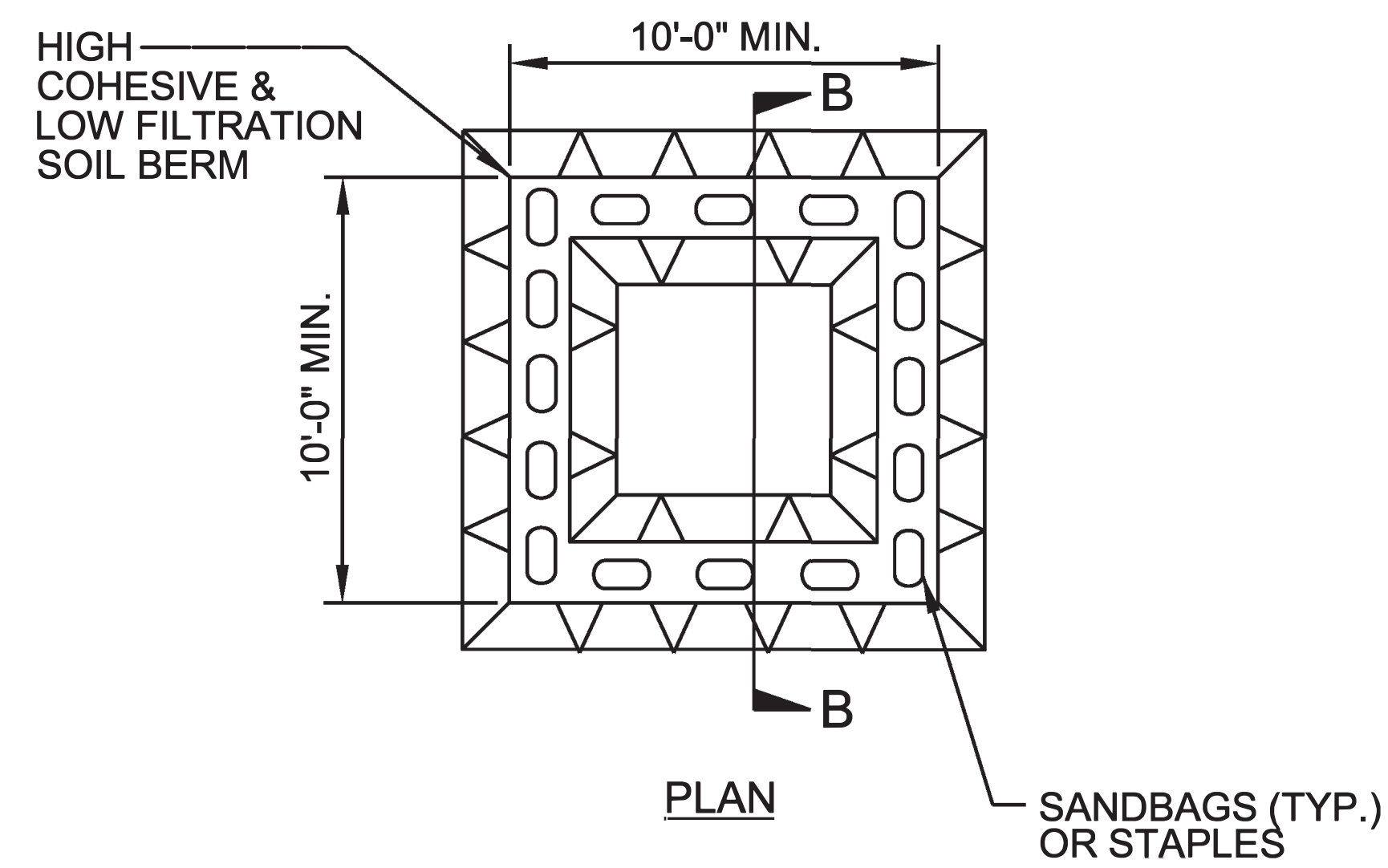
PROJECT REFERENCE NO.	SHEET NO.
2026CPT.14.08.10441	9
RW SHEET NO.	
ROADWAY DESIGN ENGINEER	HYDRAULICS ENGINEER

# ONSITE CONCRETE WASHOUT STRUCTURE WITH LINER



**BELOW GRADE WASHOUT STRUCTURE**  
NOT TO SCALE

- NOTES:**
1. ACTUAL LOCATION DETERMINED IN FIELD
  2. THE CONCRETE WASHOUT STRUCTURES SHALL BE MAINTAINED WHEN THE LIQUID AND/OR SOLID REACHES 75% OF THE STRUCTURES CAPACITY TO PROVIDE ADEQUATE HOLDING CAPACITY WITH A MINIMUM 12 INCHES OF FREEBOARD.
  3. CONCRETE WASHOUT STRUCTURE NEEDS TO BE CLEARLY MARKED WITH SIGNAGE NOTING DEVICE.



**ABOVE GRADE WASHOUT STRUCTURE**  
NOT TO SCALE

- NOTES:**
1. ACTUAL LOCATION DETERMINED IN FIELD
  2. THE CONCRETE WASHOUT STRUCTURES SHALL BE MAINTAINED WHEN THE LIQUID AND/OR SOLID REACHES 75% OF THE STRUCTURES CAPACITY TO PROVIDE ADEQUATE HOLDING CAPACITY WITH A MINIMUM 12 INCHES OF FREEBOARD.
  3. CONCRETE WASHOUT STRUCTURE NEEDS TO BE CLEARLY MARKED WITH SIGNAGE NOTING DEVICE.

PROJECT NO.	SHEET NO.	TOTAL NO.
2026CPT.14.08.10441, 50943.3.7	10	

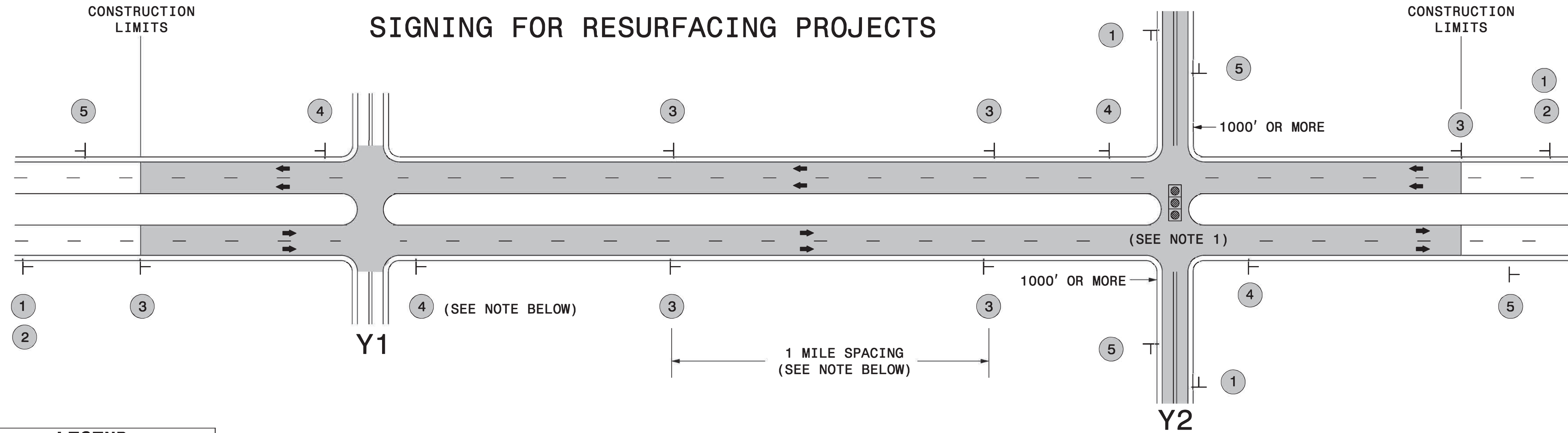
### SUMMARY OF QUANTITIES

PROJECT NO	COUNTY	MAP NO	ROUTE	DESCRIPTION	TYP NO	LANES	LANE TYPE	LENGTH	WIDTH	BEGIN MP	END MP	1297000000-E	1523000000-E	1575000000-E	1704000000-E	2549000000-E	2591000000-E	2612500000-N	2759000000-N	2815000000-N	2830000000-N	2845000000-N	4600000000-N	6000000000-E	6029000000-E	6042000000-E	6084000000-E	6117000000-N	6117500000-N	7444000000-E	7456100000-E				
												1 1/2" MILLING	SURFACE COURSE, S9.5C	ASPHALT BINDER FOR PLANT MIX	PATCHING EXISTING PAVEMENT	2'-6" CURB & GUTTER	4" CONCRETE SIDEWALK	REMOVE AND REPLACE CONCRETE CURB RAMPS	REMOVE EXISTING CURB RAMP	ADJ. OF DROP INLET	ADJ. OF MANHOLES	ADJ. OF METER OR VALVE BOX	AUDIBLE WARNING DEVICE	TEMPORARY CURB RAMPS	TEMPORARY SILT FENCE	SAFETY FENCE	1/4" HARDWARE CLOTH	SEED & MULCHING	RESPONSE FOR EROSION CONTROL	CONCRETE WASHOUT STRUCTURE	INDUCTIVE LOOP SAWCUT	LEAD-IN CABLE (14-2)			
MI	FT			SY	TONS	TONS	TONS	LF	SY	EA	EA	EA	EA	EA	EA	EA	EA	EA	EA	EA	EA	EA	EA	EA	EA	EA	EA	EA	EA	EA	EA	EA	EA		
2026CPT.14.08.10441	Haywood	1	US-19	FROM SR 1307 TO MM 8.25	1	5		0.460	64	7.790	8.250	17,272	1,451	122	751																		1,065.00	300.00	
<b>TOTAL FOR MAP NO. 1</b>								<b>0.460</b>				<b>17,272</b>	<b>1,451</b>	<b>122</b>	<b>751</b>																		<b>1,065.00</b>	<b>300.00</b>	
2026CPT.14.08.10441	Haywood	2	US-19	ALONG US 19 FROM MM 8.55 TO S LAKESHORE DR		2	MD	3.260	60	8.550	11.810	114,752	9,639	710	2,952																		904.00	21.00	
<b>TOTAL FOR MAP NO. 2</b>								<b>3.260</b>				<b>114,752</b>	<b>9,639</b>	<b>710</b>	<b>2,952</b>																		<b>904.00</b>	<b>21.00</b>	
<b>TOTAL FOR PROJ NO. 2026CPT.14.08.10441</b>								<b>3.720</b>				<b>132,024</b>	<b>11,090</b>	<b>832</b>	<b>3,703</b>																		<b>1,969.00</b>	<b>321.00</b>	
50943.3.7	Haywood	1,2	US-19	FROM SR 1307 TO S LAKESHORE DR		2	2WD	4.020	20	7.790	11.810				169	63	4	7																	
<b>TOTAL FOR MAP NO. 5</b>								<b>4.020</b>							<b>169</b>	<b>63</b>	<b>4</b>	<b>7</b>																	
<b>TOTAL FOR PROJ NO. 50943.3.7</b>								<b>4.020</b>							<b>169</b>	<b>63</b>	<b>4</b>	<b>7</b>																	
<b>GRAND TOTAL</b>								<b>7.740</b>				<b>132,024</b>	<b>11,090</b>	<b>832</b>	<b>3,703</b>	<b>169</b>	<b>63</b>	<b>4</b>	<b>7</b>	<b>85</b>	<b>18</b>	<b>12</b>	<b>4</b>	<b>2</b>	<b>150</b>	<b>150</b>	<b>60</b>	<b>0.50</b>	<b>5</b>	<b>5</b>	<b>1,969.00</b>	<b>321.00</b>			

PROJECT NO.	SHEET NO.	TOTAL NO.
2026CPT.14.08.10441, 50943.3.7	11	

**THERMOPLASTIC AND PAINT QUANTITIES**

PROJECT NO	COUNTY	MAP NO	ROUTE	DESCRIPTION	TYP NO	LANES	LANE TYPE	LENGTH	WIDTH	BEGIN MP	END MP	4413000000-E	4447000000-E	4457000000-N	4688000000-E		4695000000-E	4709000000-E	4720000000-E	4725000000-E				4810000000-E				4820000000-E	4835000000-E	4840000000-N	4845000000-N				4895000000-N
												WORK ZONE ADVANCE/GENERAL WARNING SIGNING	PEDESTRIAN CHANNELIZING DEVICES	TEMPORARY TRAFFIC CONTROL	THERMOPLASTIC PAVEMENT MARKING LINES (6", 90 MILS)(WHITE)	THERMOPLASTIC PAVEMENT MARKING LINES (6", 90 MILS)(YELLOW)	THERMOPLASTIC PAVEMENT MARKING LINES (8", 90 MILS)(WHITE)	THERMOPLASTIC PAVEMENT MARKING LINES (24", 90 MILS)(WHITE)	THERMO MSG SCHOOL 90 M	THERMO RT ARROW 90 M	THERMO LT ARROW 90 M	THERMO STR ARROW 90 M	THERMO STR & RT ARROW 90 M	4" WHITE PAINT	4" YELLOW PAINT	8" WHITE PAINT	24" WHITE PAINT	PAINT MSG SCHOOL	PAINT RT ARROW	PAINT LT ARROW	PAINT STR ARROW	PAINT STR & RT ARROW	INLAID RAISED PAVEMENT MARKERS		
MI	FT	SF	LF	LF	LF	LF	EA	EA	EA	EA	LF	LF	LF	LF	EA	EA	EA	EA	EA	EA	EA	EA	EA	EA	EA	EA	EA	EA	EA	EA	EA				
2026CPT.14.08.10441	Haywood	1	US-19	FROM SR 1307 TO MM 8.25	1	5		0.46	64	7.79	8.25	52		0.13	1,490	5,968		80		5	7			1,490	5,968		80		5	7			127.00		
<b>TOTAL FOR MAP NO. 1</b>							<b>0.46</b>					<b>52</b>		<b>0.13</b>	<b>1,490</b>	<b>5,968</b>		<b>80</b>		<b>5</b>	<b>7</b>			<b>1,490</b>	<b>5,968</b>		<b>80</b>		<b>5</b>	<b>7</b>		<b>127.00</b>			
2026CPT.14.08.10441	Haywood	2	US-19	ALONG US 19 FROM MM 8.55 TO S LAKESHORE DR	1	2	MD	3.26	60	8.55	11.81			0.85	9,440	40,788	245	100	12	43	54	6	2	9,440	40,788	245	200	12	43	54	6	2	853.00		
<b>TOTAL FOR MAP NO. 2</b>							<b>3.26</b>							<b>0.85</b>	<b>9,440</b>	<b>40,788</b>	<b>245</b>	<b>100</b>	<b>12</b>	<b>43</b>	<b>54</b>	<b>6</b>	<b>2</b>	<b>9,440</b>	<b>40,788</b>	<b>245</b>	<b>200</b>	<b>12</b>	<b>43</b>	<b>54</b>	<b>6</b>	<b>2</b>	<b>853.00</b>		
<b>TOTAL FOR PROJ NO. 2026CPT.14.08.10441</b>							<b>3.72</b>					<b>52</b>		<b>0.98</b>	<b>10,930</b>	<b>46,756</b>	<b>245</b>	<b>180</b>	<b>12</b>	<b>48</b>	<b>61</b>	<b>6</b>	<b>2</b>	<b>10,930</b>	<b>46,756</b>	<b>245</b>	<b>280</b>	<b>12</b>	<b>48</b>	<b>61</b>	<b>6</b>	<b>2</b>	<b>980.00</b>		
								<b>57,686</b>												<b>117</b>				<b>57,686</b>				<b>117</b>							
50943.3.7	Haywood	1,2	US-19	FROM SR 1307 TO S LAKESHORE DR	1	2	2WD	4.02	20	7.79	11.81		50	0.02																					
<b>TOTAL FOR MAP NO. 5</b>							<b>4.02</b>						<b>50.000</b>	<b>0.020</b>																					
<b>TOTAL FOR PROJ NO. 50943.3.7</b>							<b>4.02</b>						<b>50.000</b>	<b>0.020</b>																					
<b>GRAND TOTAL</b>								<b>7.74</b>				<b>52</b>	<b>50.000</b>	<b>1.000</b>	<b>10,930</b>	<b>46,756</b>	<b>245</b>	<b>180</b>	<b>12</b>	<b>48</b>	<b>61</b>	<b>6</b>	<b>2</b>	<b>10,930</b>	<b>46,756</b>	<b>245</b>	<b>280</b>	<b>12</b>	<b>48</b>	<b>61</b>	<b>6</b>	<b>2.00</b>	<b>980</b>		
								<b>57,686</b>												<b>117</b>				<b>57,686</b>				<b>117</b>							



LEGEND	
┆	STATIONARY SIGN
←	DIRECTION OF TRAFFIC FLOW

### MAINLINE (-L-) SIGNING

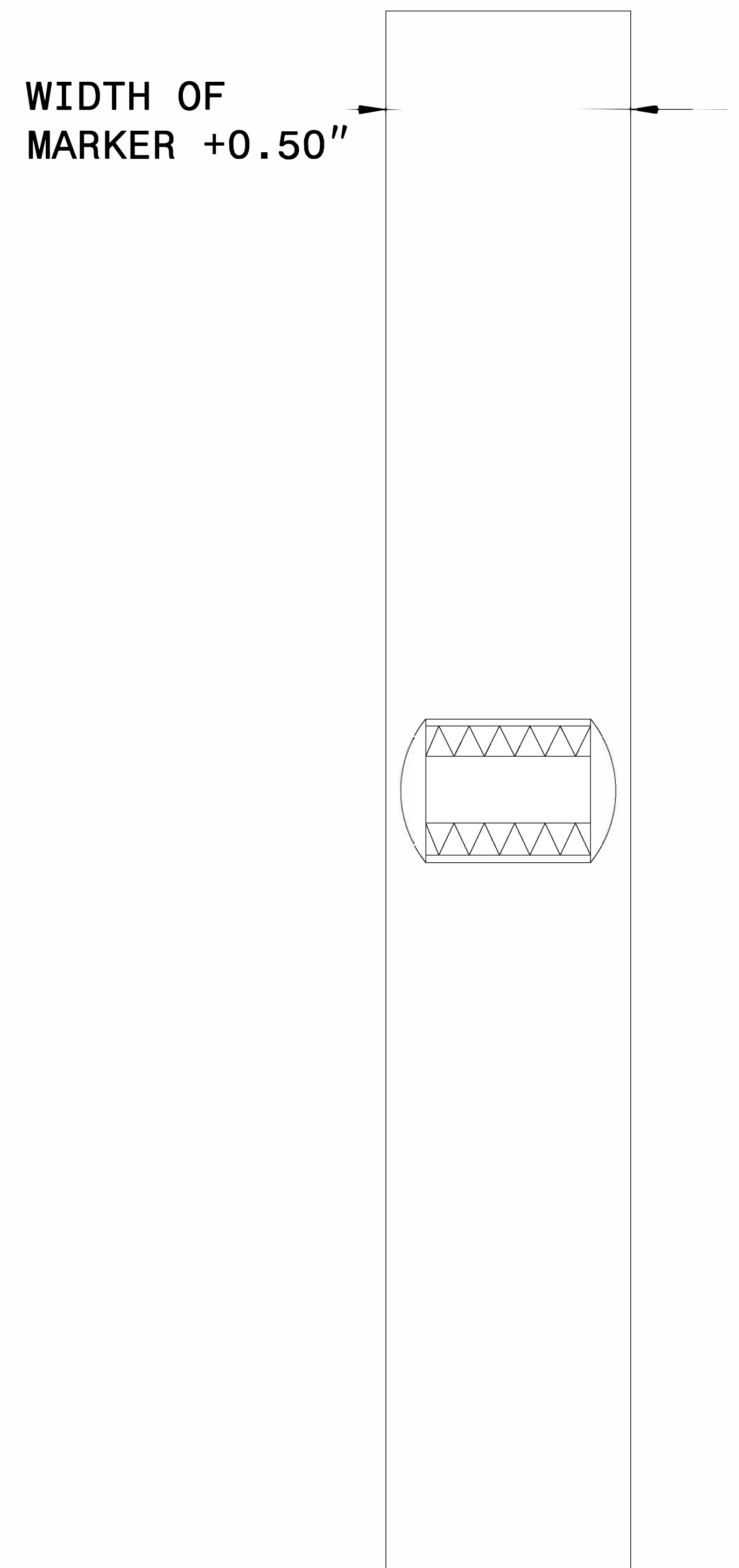
### -Y- LINE SIGNING

SIGNING NOTES AND PLACEMENT PER DIRECTION	 	<p>PLACE 1000' PRIOR TO BEGINNING OF CONSTRUCTION LIMITS. ONLY USED ON -Y- LINES IF RESURFACING LIMITS EXTEND 1000' ALONG -Y- LINE.</p> <p>#2 SIGN ONLY USED WHEN RESURFACING LIMITS ARE 2 OR MORE MILES IN LENGTH. ROUND UP TO NEXT WHOLE NUMBER. (NO FRACTIONAL OR DECIMAL NUMBERS)</p>	<p>NO REQUIRED STATIONARY SIGNING FOR THE FOLLOWING -Y- LINE CONDITIONS:</p> <ol style="list-style-type: none"> <li>1) LESS THAN 1000' OF RESURFACING ALONG -Y- LINE</li> <li>2) SUBDIVISION ROADS</li> <li>3) DEAD END ROADS</li> </ol> <p>WHEN PAVING/CONSTRUCTION ACTIVITIES PROCEED ACROSS AN UNSIGNED -Y- LINE, ADVANCE WARNING PORTABLE SIGNS SHALL BE USED ALONG THE -Y- LINE AS SHOWN BELOW. REMOVE UPON COMPLETION OF WORK.</p> <div style="display: flex; justify-content: space-around; align-items: center;"> <div style="text-align: center;">   <small>W20-1 48" X 48"</small> </div> <div style="text-align: center;">   <small>W20-7 A 48" X 48"</small> </div> </div> <p>PLACED 500' IN ADVANCE OF FLAGGER. PLACED 250' IN ADVANCE OF FLAGGER.</p> <p>NOTES:</p> <ol style="list-style-type: none"> <li>1) MAY USE LAW ENFORCEMENT TO CONTROL TRAFFIC AT SIGNALIZED INTERSECTIONS AS DIRECTED BY THE ENGINEER. PROVIDE PORTABLE "ROAD WORK AHEAD" (W20-1) SIGNS 500' IN ADVANCE ALONG BOTH APPROACHES FROM THE SIDE STREETS WHEN PAVING PROCEEDS THROUGH THE INTERSECTION.</li> </ol>
		<p>PLACE INITIALLY AT THE CONSTRUCTION LIMITS AND SPACED 1 MILE APART THEREAFTER. IF NO -Y- LINES EXIST, PLACE 2ND SET 1/2 MILE FROM THE CONSTRUCTION LIMITS AND THEN SPACE 1 MILE THEREAFTER.</p>	
		<p>THESE ARE FOR -Y- LINES THAT ARE "THROUGH" ROADWAYS. DEAD END AND SUBDIVISION ROADS ARE NOT "THROUGH" ROADWAYS. INSTALL 500' +/- FROM EACH -Y- LINE APPROACH AS SHOWN ABOVE. FOR MULTIPLE -Y- LINES THAT ARE SEPARATED BY 0.25 MILES OR LESS, TREAT AS A SINGLE UNIT AND INSTALL WITHIN 500' OF EACH APPROACH. A MAXIMUM OF 2 SIGN SETS PER MILE. DO NOT INSTALL WHEN -Y- LINES ARE WITHIN 0.5 MILES FROM "END ROAD WORK" SIGN.</p>	
		<p>PLACE 500' FOLLOWING THE END OF CONSTRUCTION LIMITS.</p>	

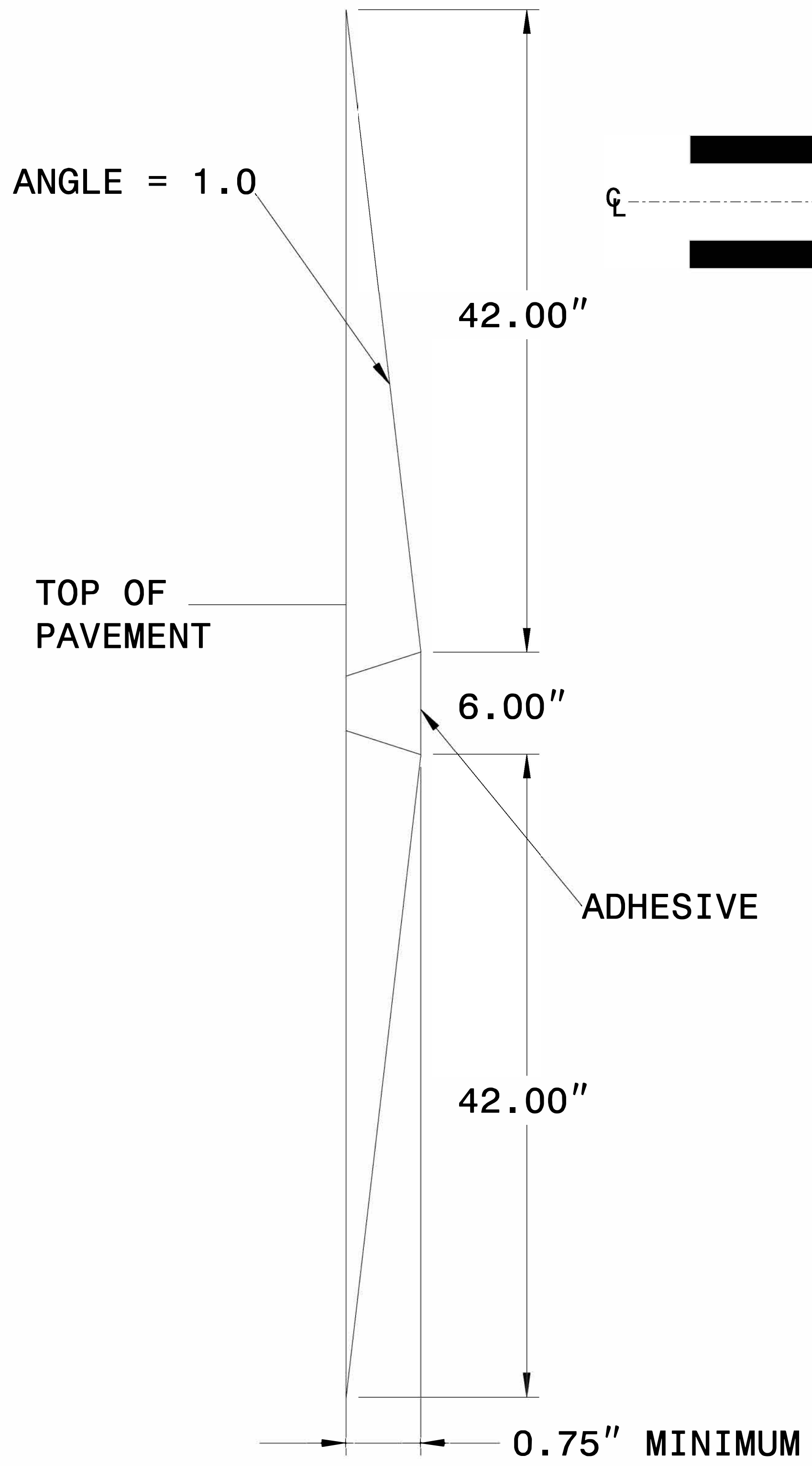
3/23/2015 C:\Users\rmgarrrett\Downloads\Resurfacing\_AdvWarn\_UrSu\_Snldr.dgn User:rmgarrrett

**RESURFACING  
ADVANCE WARNING SIGNS  
FOR RURAL AND SUBURBAN  
MULTI-LANE ROADWAYS  
W/ SHOULDER SECTIONS**

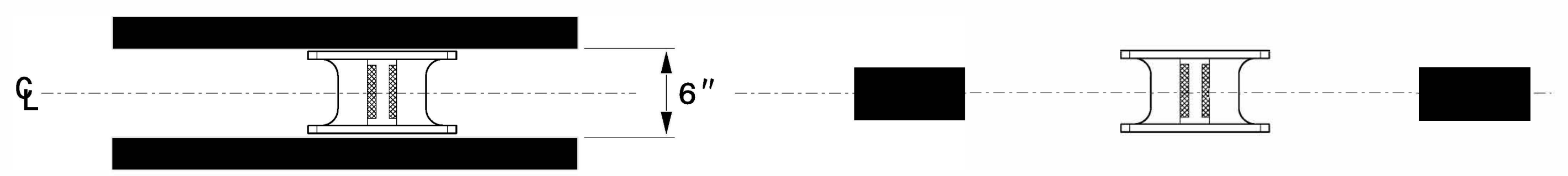
**PLAN VIEW**



**SECTION VIEW**



**MARKER SPACING**



Signed by:  
*Matthew V. Springer, PE*  
BC60F6E8B584403...

**NOTES:**

1. THE PAVEMENT SHALL BE SAW CUT TO THE DIMENSIONS SHOWN.
2. THE SAW CUT AREA MUST BE DRY AND FREE OF DUST. DIRT OR ANY MATERIAL WHICH WILL ADVERSELY AFFECT THE BOND OF THE ADHESIVE.
3. INSTALL MARKERS WITH APPROVED ADHESIVE. ADHESIVE SHOULD NOT BE ALLOWED TO BUILD UP IN FRONT OF MARKER LENS.
4. THE MARKER AND THE ADHESIVE PAD SHALL NOT EXCEED THE TOP OF THE PAVEMENT SURFACE. DEPTH = 0.75" MINIMUM.
5. RECESSED MARKERS INSTALLED ON CONCRETE PAVEMENT SHOULD BE INSTALLED A MINIMUM OF 2" FROM THE PAVEMENT JOINT OR EDGE

<b>CONTRACTS STANDARDS AND DEVELOPMENT UNIT</b>	
Office 919-707-8950 FAX 919-250-4119	
<b>DETAIL OF INLAID RAISED PAVEMENT MARKER</b>	
ORIGINAL BY: rgwatson	DATE: 02-06-2024
MODIFIED BY:	DATE: _____
CHECKED BY:	DATE: _____
FILE SPEC.:	